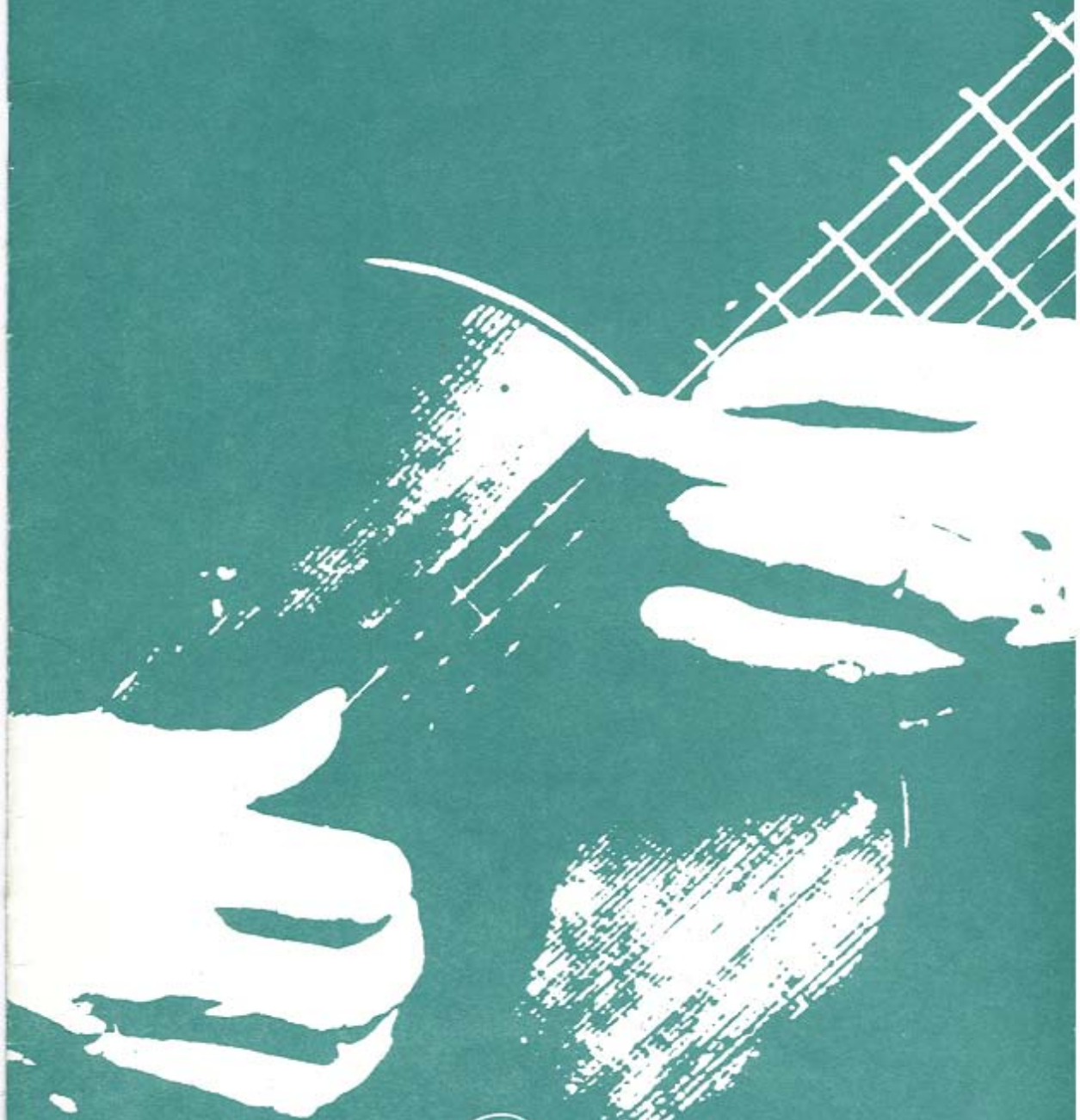


# JORGE MOREL FOUR PIECES



*Corvus*  
PUBLICATIONS

## BOSSA IN RE



harm ? f

C IV

C VII

1 2

## PAMPERO

mp

cresc.

mp

mp

mp

mp

1 3 2 3 0 2 3

The musical score for "Pampero" is written in G major (one sharp) and 3/4 time. It consists of six staves of music. The first staff begins with a mezzo-piano (mp) dynamic. The second staff includes a crescendo (cresc.) marking. The third and fourth staves feature various articulations such as accents and slurs. The fifth staff returns to a mezzo-piano (mp) dynamic. The sixth staff includes a double bar line with repeat dots, followed by a sequence of fingerings: 1, 3, 2, 3, 0, 2, 3. The piece concludes with a final chord.





CVII

CVII

to .S. CODA

harm 12

CIII

CV

## GATO

allegro

mf

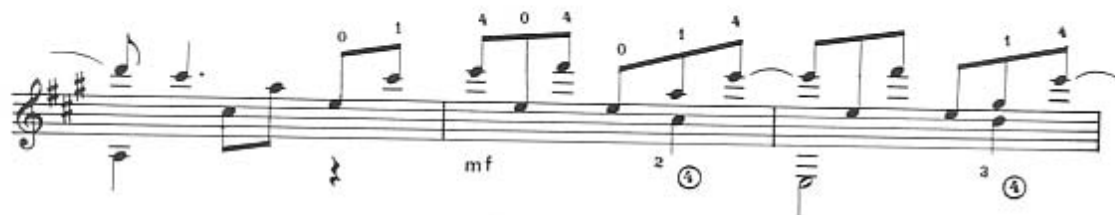
C VII

C IX

harm

The image shows a page of musical notation for guitar, titled 'GATO'. The music is in treble clef with a key signature of two sharps (F# and C#) and a 2/8 time signature. The tempo is marked 'allegro' and the dynamic is 'mf'. The score consists of seven staves of music. The first staff begins with a double bar line and a repeat sign. The second staff is labeled 'C VII' and contains a sequence of notes with fingerings (1, 0, 4, 0, 3, 1, 4) and a circled '4'. The third staff continues the sequence with fingerings (3, 4, 0, 4, 3, 4) and circled '4' and '5'. The fourth staff is labeled 'C IX' and has fingerings (1, 4, 3, 2). The fifth staff includes 'harm' (harmonic) markings above notes with fingerings (3, 1, 0, 12, 0, 12, 12) and a circled '3'. The sixth and seventh staves continue the melodic line with various fingerings and a circled '2' in the seventh staff.





C II

A tempo  
breve

1.

2.

FINE.

## ZAMBEANDO

*Lento*

*mp*

CIII

CII

CII

*mf*

1 2

CV CIII

*f*

CIV CII CII

*p* *mp*

CII

*mf*

*D.C.*

The musical score for 'ZAMBEANDO' is written for a single melodic line on a treble clef staff in 3/8 time. The tempo is marked 'Lento'. The score consists of eight staves of music. The first staff begins with a mezzo-piano (*mp*) dynamic and includes fingering numbers (1, 2, 3, 4) and a circled '3'. The second staff features a circled '3' and a circled '5'. The third staff has a circled '5' and a circled '3'. The fourth staff includes a circled '3' and a circled '5'. The fifth staff is marked with a first ending bracket (1) and a second ending bracket (2), and includes a circled '3'. The sixth staff is marked with a circled '3' and a circled '5'. The seventh staff includes a circled '3' and a circled '5'. The eighth staff concludes with a double bar line and the marking 'D.C.' (Da Capo). Dynamics range from *p* (piano) to *f* (forte). Fingerings are indicated by numbers 1-4, and circled numbers indicate specific fingering patterns or ornaments.